



Leaf Metamorphosis

My research aims to design materials and surfaces by harnessing the potential of nature and considering its renewal. I propose a high-end artisanal process for luxury.

By choosing to work on the scale of the city of Paris, my approach took shape. Indeed, Paris is one of the most wooded capitals in Europe with over 200,000 trees. Every year, 4,500 tons of dead leaves are collected and then discarded and burned because they are too polluted to be composted.

So, how can we revalue this raw vegetal material considered as waste?

Through a harvest carried out in Paris, I work locally with what I find on concrete. I have the intention to respect the life cycle of the plant, so I only collect the «dead» materials and not the still living ones that I would extract from their environment. I want to showcase what is meant to no longer be seen and highlight the beauty of these leaves, even though they are at the end of their life and dry.

A true revaluation of this material is achieved through my harvest and the established transformation process. Wanting to perpetuate the ephemeral, I stabilize these leaves to preserve their flexibility. I soak them for several months in a bath using a natural process. Once stabilized, the leaves become less fragile and more manageable. I can then work with this material more easily—cutting it, gluing it, weaving it, assembling it, or sewing it.

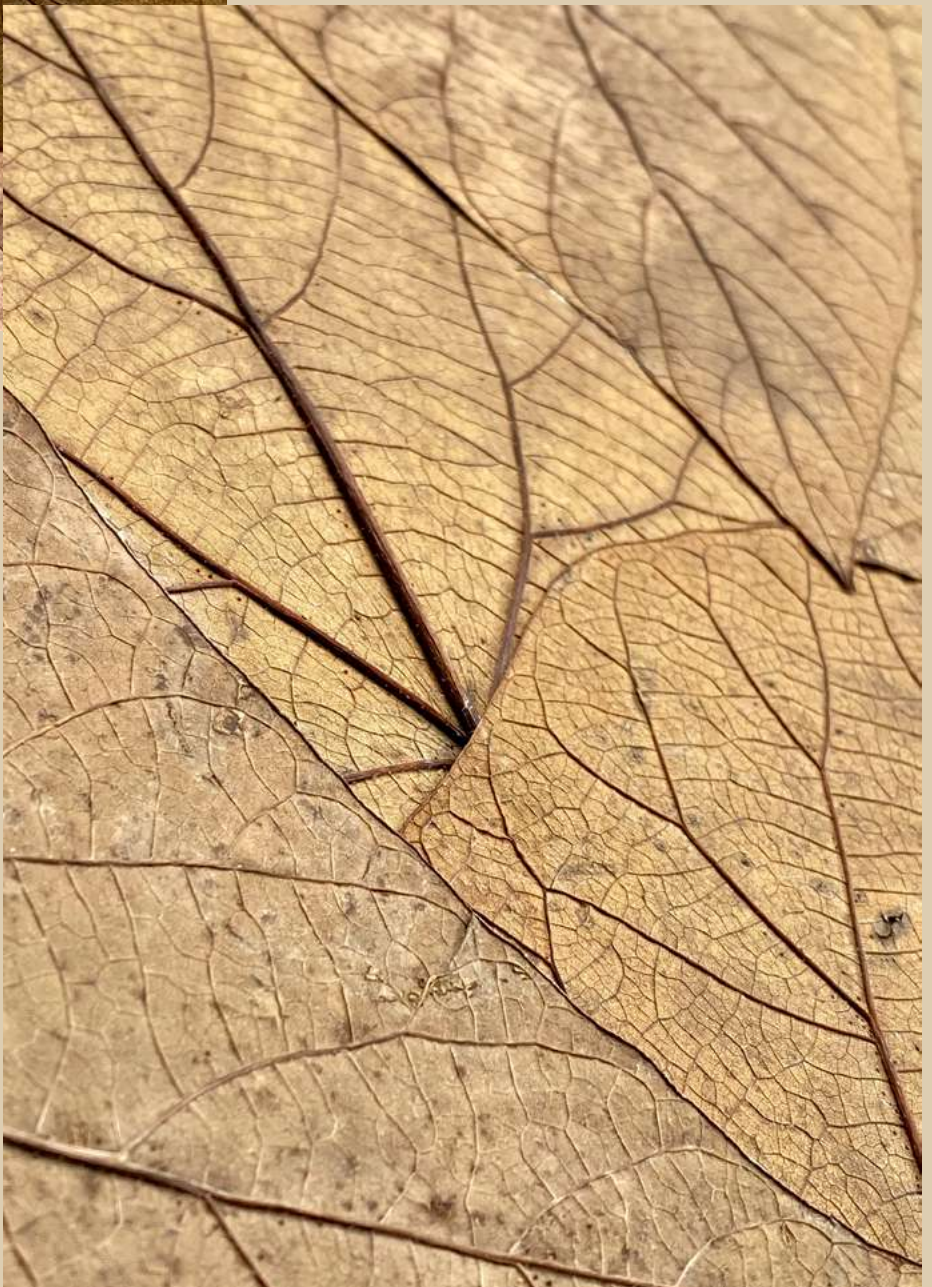
This project, rooted in the search for new materials, seeks to offer an emotional and sensory experience by transforming waste into luxury materials. I aim to communicate a positive message that serves a dual purpose: to encourage awareness by proposing sustainable concepts using local materials while paying a poetic tribute to the season of autumn.





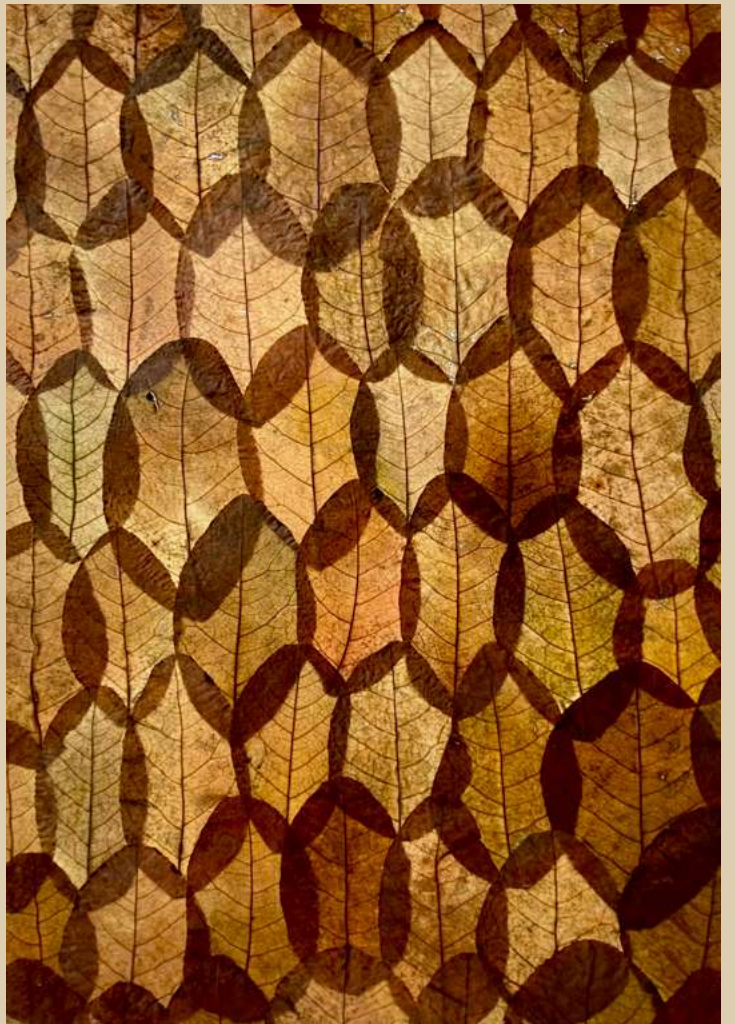
Harvesting, Sorting & Drying

Each leaf is collected by hand, carefully selected without holes, then sorted, hulled and finally stored. The temporal dimension is fully integrated into my approach. Indeed, the process is so long and depends on the seasons. This makes the material even more desirable and unique.



Working with the leaf as flat surfaces to showcase its beauty, simply emphasizing its natural qualities without adding any other material.

Creating collages that play with graphics, colors, transparency, and also different textures based on the types of leaves used.











« *Pluie d'automne* » Cutting semi-circles from plane tree leaves with a gradient of colors, and then sewing them onto linen canvas using natural dye.

Working with the leaf in different ways: sewing, cutting, hand weaving...

By manipulating and experiencing the material, I strive to find a balance between tension, flexibility, and the limits of the material.

Textile becomes a material of endless possibilities, evoking hybrid worlds that are both cellular and organic.



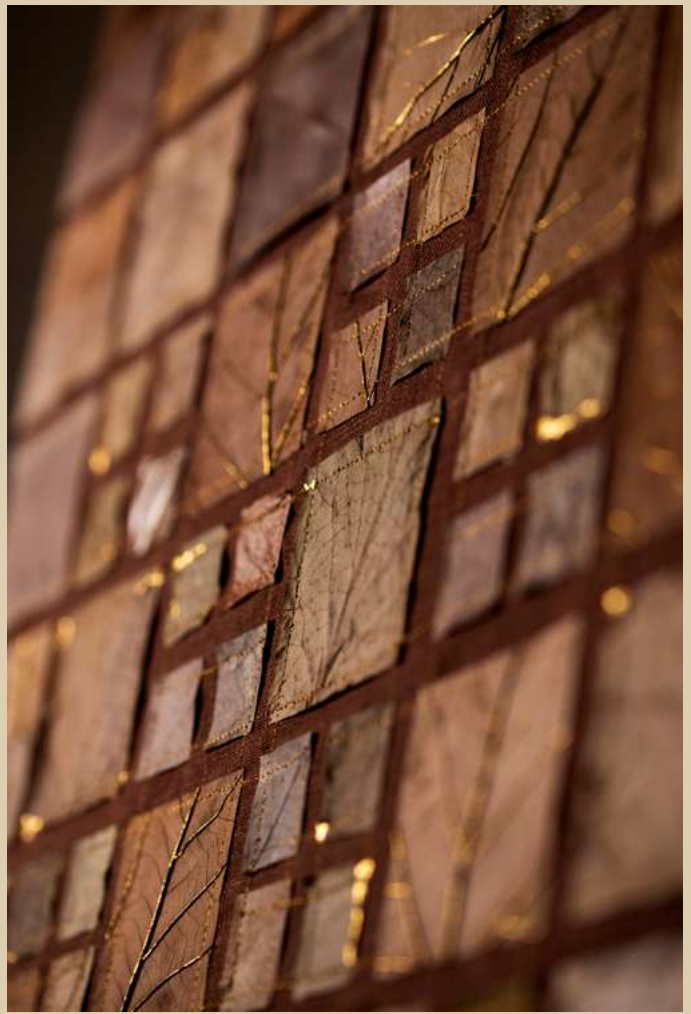




Crillon hotel, Paris
Exhibition july / august 2023







« Nature mosaïque » 58 x 78 cm

Half-circle mirror
« Rue saint Honoré »
Interwoven plane tree strips,
hand weaving.



« *Vegetal puzzle* » 43 x 52 cm 1 900 euros



« *Indian mirror* » 84 x 50 cm
1 900 euros

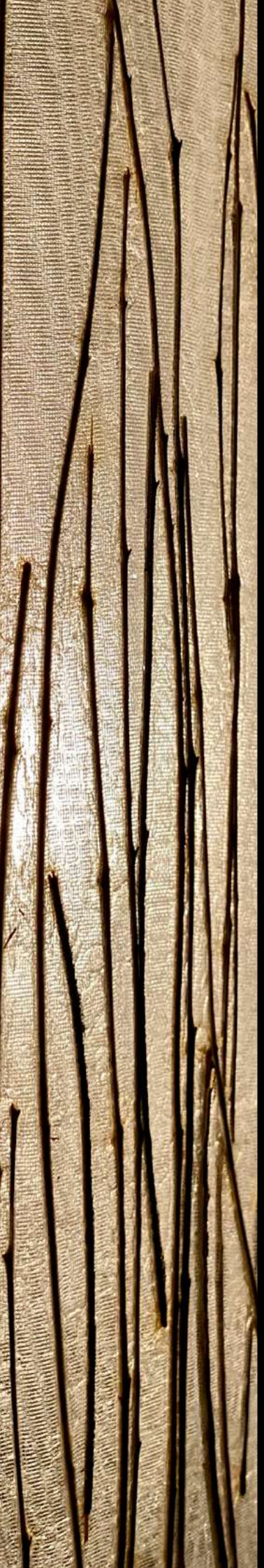


« *Rebirth* » lamp
1 200 euros



Wall artwork, various round leaves collaged on wood.





Light fixture/divider/screen made with crushed leaves and stems between two silk veils, using 100% natural homemade glue.



« Nature's Gilded Touch » 25 x 67 cm 1 200 euros



Perfume display & wine bottle display with vine leaves made in collaboration with Estelle Matczak.



« Caméléon » 70 x 110cm
1 900 euros



« Screens »

Collaboration with Elliott Barnes to create two screens with chestnut leaves from the Salmon Billecart champagne estate..





« Lunar & Half moon mirror » at Grillon hotel
Stitched oleander leaf mirrors with gold stems
and Asian leaves (frangipani).



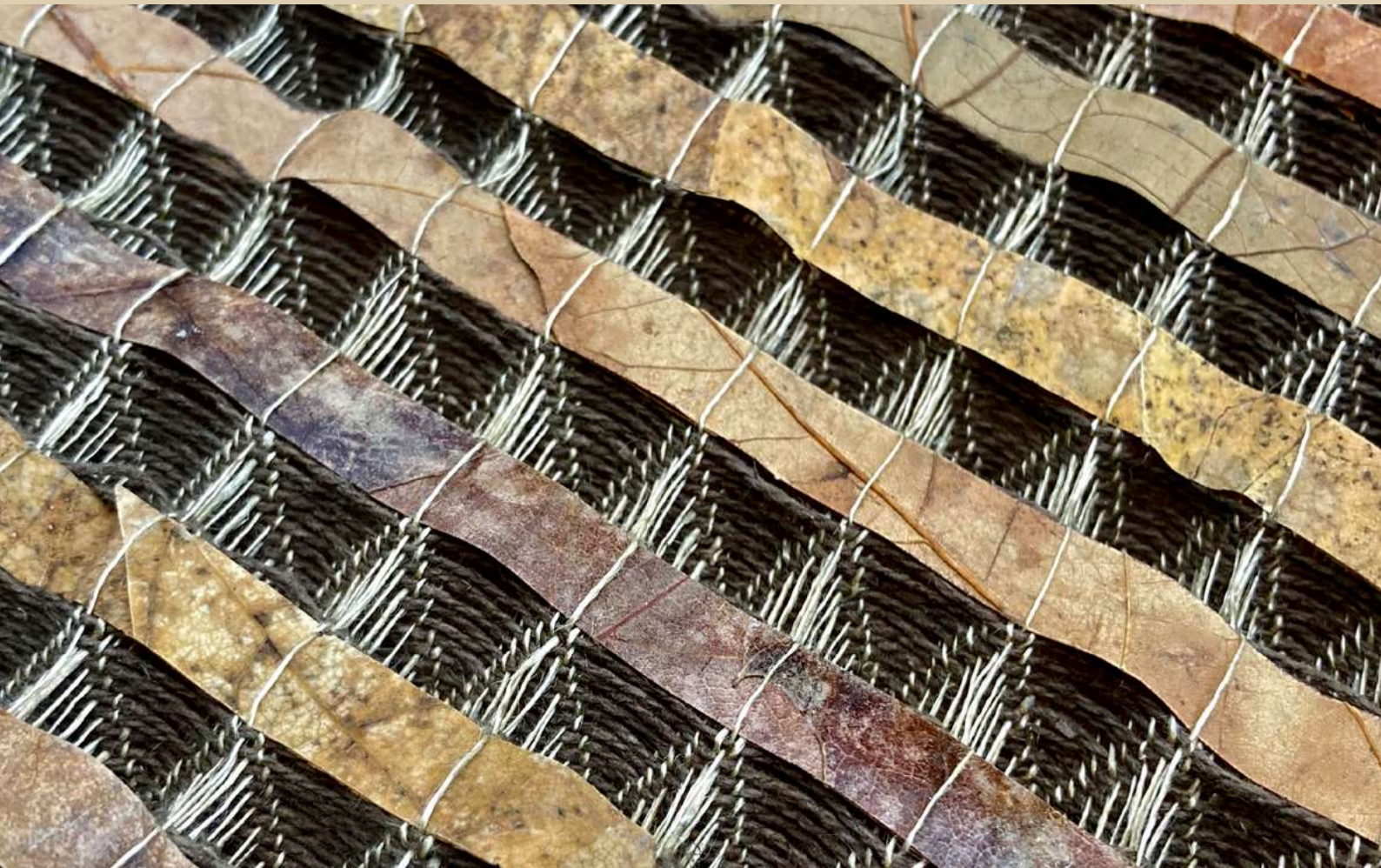


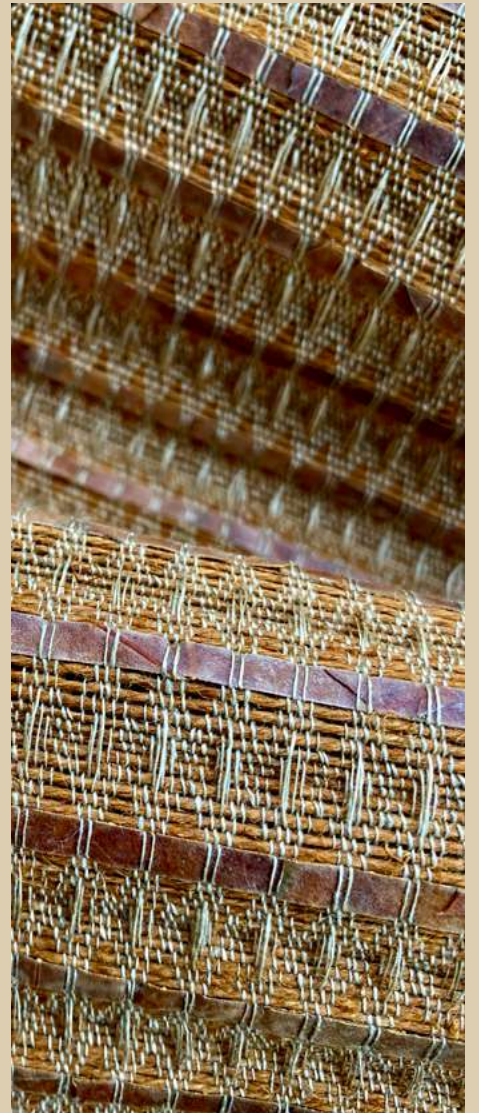
Weaving

Weaving primarily with a linen warp intertwined with strips of Parisian leaves.

Graphic patterns naturally formed by the details of the leaves and the irregular color variations.

Achieving a textile and material that visually resembles leather.





« Rue d'Hauteville »
Plane tree



Most of the photos were taken by Marion Saupin.



Alyssa Jos

Insta : @alysajos_creations
Mail : alyssajos75@gmail.com

Représentée par Eric Hennebert

Insta : @erichennebert
Mail : eric@erichennebert.com

Métamorphose

